

## ADCAMAT PACKAGED AUTOMATIC PUMP TRAPS PPT-K (Simplex)

### DESCRIPTION

The ADCAMat PPT-K packaged pump trap unit is intended for lifting hot condensate in closed loop systems.

The unit is comprised by an ADCAMat PPT14 pump trap, a receiver and all auxiliary items, compactly mounted on a metal frame, piped and ready for connection, saving time, work and site costs. In addition, it ensures that the installation of the pump trap is correct in every detail. Two or more units can be connected in parallel to cope with flow rates beyond the capacity of a single unit.

### MAIN FEATURES

Fully assembled and tested, saving design, assembly and commissioning time.

Compactly mounted in a structural steel metal frame to save floor space.

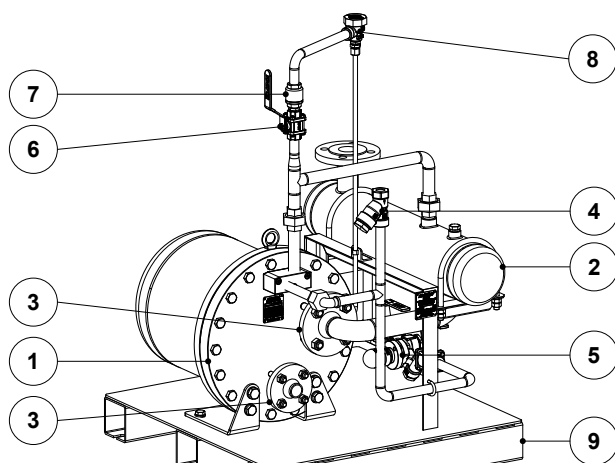
OPTIONS: Alternative configurations and designs.

### AVAILABLE MODELS:

PPTS-K – carbon steel.  
PPTSS-K – stainless steel.

CONNECTIONS: Flanged EN 1092-1 PN 16.  
Flanged ASME B16.5 Class 150.  
Female threaded ISO 7 Rp or NPT (threaded flanges).  
Others on request.

INSTALLATION: See IMI – Installation and maintenance instructions.



CE MARKING – GROUP 2 (PED – European Directive)	
--	--

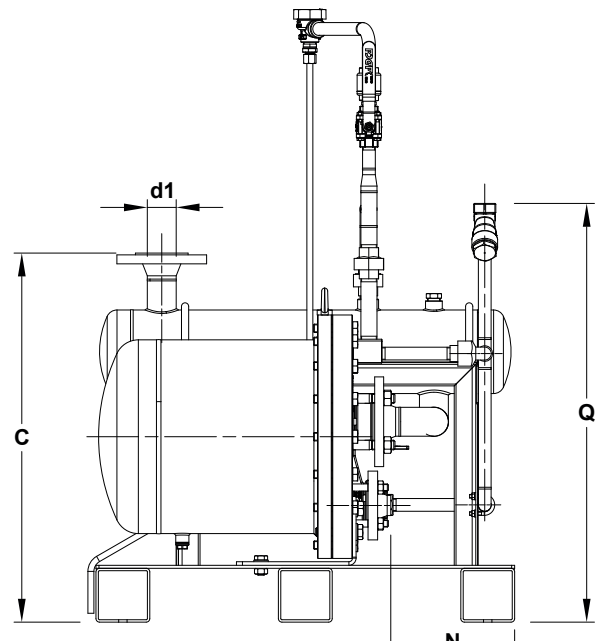
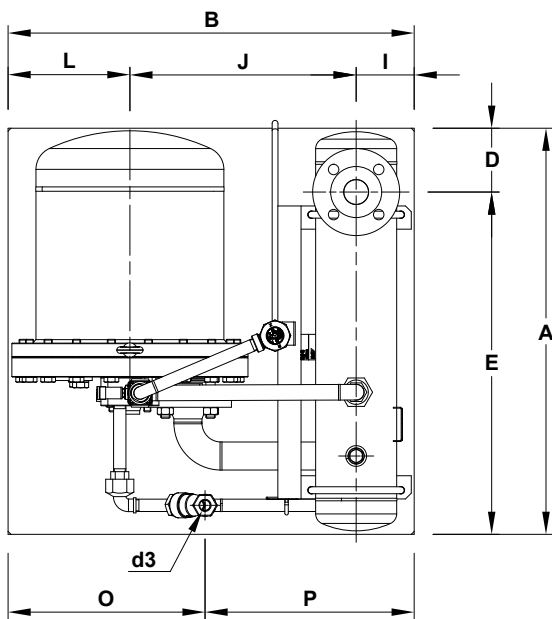
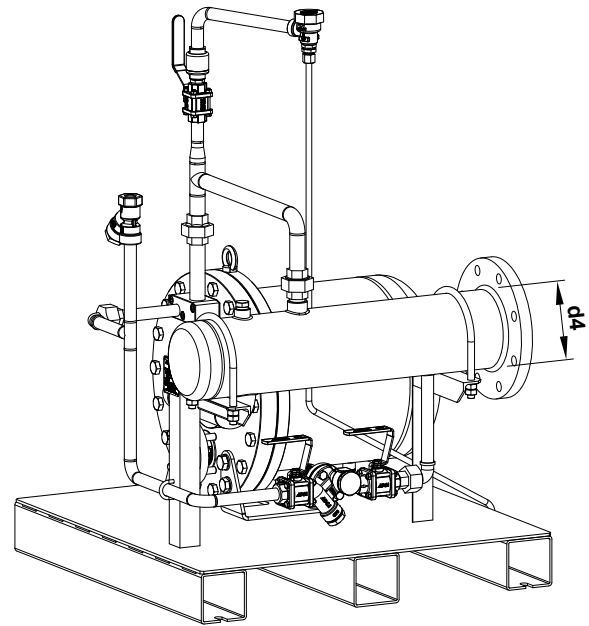
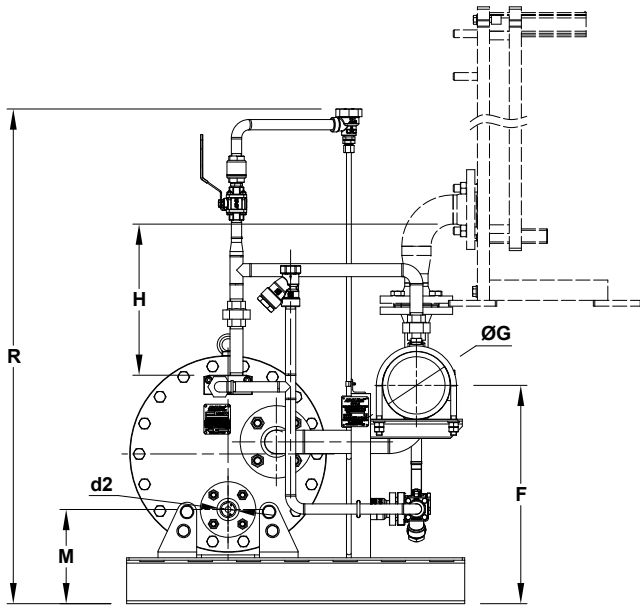
PN 16	Category
All sizes	2 (CE marked)

LIMITING CONDITIONS	
---------------------	--

Maximum operating pressure	10 bar
Maximum operating temperature	185 °C
Minimum operating temperature	0 °C
Pump trap	See IS PPT14.040

### MATERIALS

POS. N°	DESIGNATION	POS. N°	DESIGNATION
1	PPT14 pump trap	6	M3i5 ball valve
2	Receiver	7	RT25 non-return valve
3	RD40 non-return valve	8	TH13A thermostatic steam trap and air vent
4	IS140 Y strainer	9	Metal frame
5	CTS4U trapping station + UTS22 thermostatic steam trap		



Optional horizontal manifold inlet

**DIMENSIONS (mm) \***

SIZE	A	B	C	D	E	F	G	H	I	J	L	M	N	P	ØO
DN 40 x 25	700	617	110	590	100	390	210	360,5	339,5	700	207,1	195	1024,2	452	139,7
DN 50 x 40	740	664	166	574	110	390	210	370,5	339,5	700	232,1	195	1042,7	484	168,3

\* Dimensions are subject to change without notice. Consult the manufacturer for certified dimensions and weight.

**CONNECTIONS SIZES**

SIZE	d1 *	d2 **	d3 *	d4 ***
DN 40 x 25	1 1/2" – DN 40	2" – DN 25	1/2"	DN 125
DN 50 x 40	2" – DN 50	1 1/2" – DN 40	1/2"	DN 150

d1 – inlet. d2 – outlet. d3 – motive steam. d4 – optional flanged inlet connection (replaces d1).

\* Threaded d1 or flanged d3. \*\* Welding neck flange. Threaded on request. \*\*\* Can be supplied with welded reduction and either flanged or threaded connection.