

FLOAT AND THERMOSTATIC STEAM TRAPS FS32 (For use with UniAdca pipeline connectors)

DESCRIPTION

UniAdca FS32 complete stainless steel, maintenance free sealed float and thermostatic (integral air vent) steam traps series are designed for all types of low and medium pressure steam heating and process equipment.

Typical applications include unit heaters, heat exchangers, driers, jacketed vessels and all the applications where continuous drainage is essential.

These traps fit the CX40 UniAdca connectors.


MAIN FEATURES

Sealed, non-maintainable.

Modulating discharge.

Discharges condensate at steam temperature.

Unaffected by sudden or wide load and pressure changes.

Excellent air discharge (by thermostatic air vent)

OPTIONS: Double connector, for two steam traps and double the discharge capacity.

USE :

AVAILABLE Saturated and superheated steam.

MODELS :

FS32 – 4,5 to 32.

SIZES :

DN ½” to ¾” ; DN15 to DN25.

INSTALLATION :

Always in a horizontal plane with the “O” of the TOP inscription perfectly aligned with the vertical axis.

BODY LIMITING CONDITIONS

FLANGED PN40 / ANSI 300 *	FLANGED ANSI 150 **	RELATED TEMP.
ALLOW. PRES.	ALLOW. PRES.	
40 bar	19,3 bar	50 °C
35 bar	15,8 bar	150 °C
30,4 bar	12,1 bar	250 °C
27,6 bar	10,2 bar	300 °C

PMO - Max. operating pressure 32 bar

TMO - Max. operating temperature 245 °C

* According to EN1092-1:2007 ; ** Acc. to EN1759-1:2004

Body limiting conditions PN40 or below, depending on the type of connection adopted. Rating PN40 for thread, SW and BW.

MAX. DIFFERENTIAL PRESSURE

FS32-4,5 : 4,5 bar

FS32-10 : 10 bar

FS32-14: 14 bar

FS32-21: 21 bar

FS32-32: 32 bar

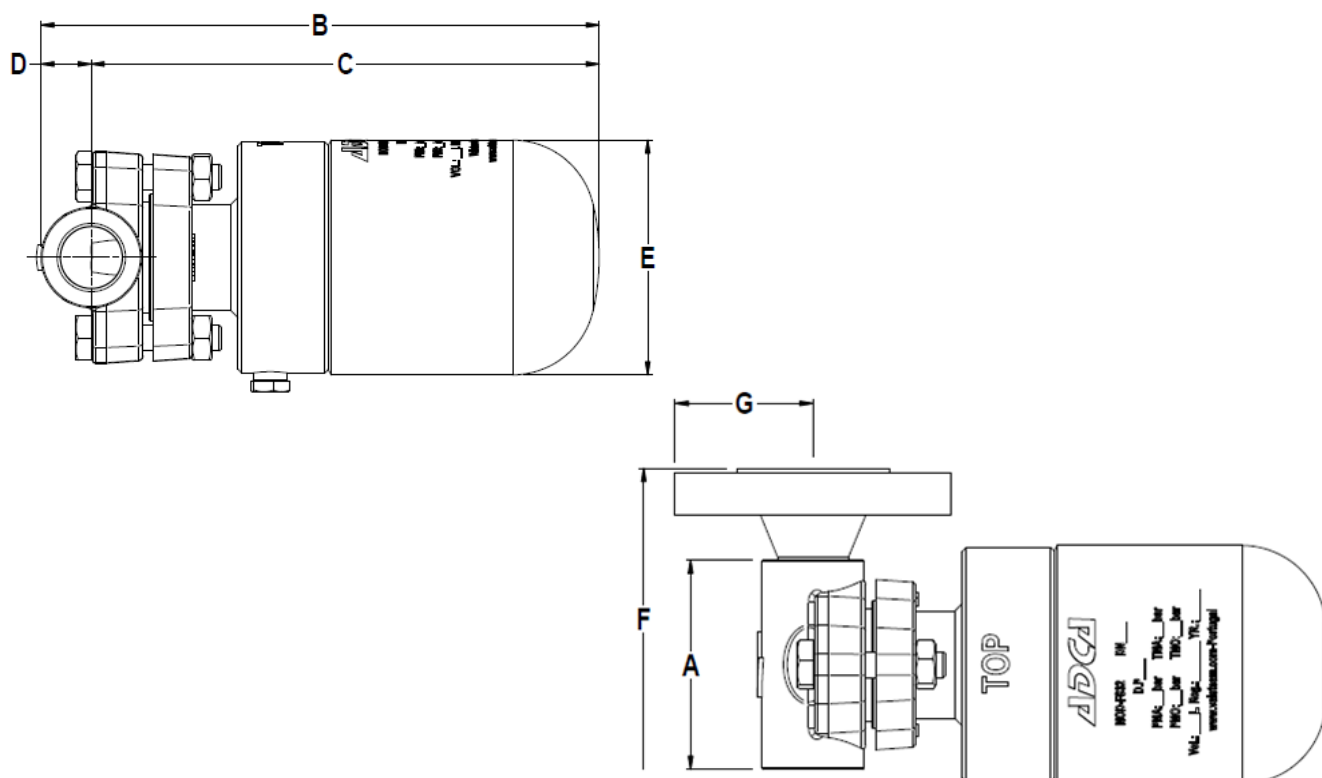
FLOW RATE CAPACITY IN Kgs/h

MODEL	DIFFERENTIAL PRESSURE (bar)															
	0,5	1	1,5	2	3	4,5	6	7	8	9	10	12	14	16	21	32
FS32-4,5	230	330	400	440	535	630										
FS32-10	150	200	250	280	340	400	460	495	520	550	595					
FS32-14	120	150	190	220	260	320	380	400	425	440	480	510	550			
FS32-21	60	80	90	115	135	160	190	200	220	230	240	260	270	290	300	
FS32-32	36	50	62	75	90	105	120	140	150	155	160	170	190	200	230	280

DIMENSIONS (mm)																
Flanged, Screwed and SW*							EN PN16/40			ANSI 150			ANSI 300			
SIZE DN	A	B	C	D	ØE	WGT. Kgs	F	G	WGT. Kgs	F	G	WGT. Kgs	F	G	WGT. Kgs	
1/2"-15	80	216	197	19	91	5,3	150	47,5	6,8	150	44,5	6,3	150	47,5	6,8	
3/4"-20	80	216	197	19	91	5,3	150	52,5	7,4	150	49	6,7	150	58,5	7,8	
**25	80	216	197	19	91	/	160	57,5	7,9	160	54	7,3	160	62	8,3	

* BW (butt weld) on request.

** Threaded version available only with connector CX40SS



MATERIALS		
POS.Nr.	DESIGNATION	MATERIAL
1	Body	P250GH / 1.0460
2	Cover	AISI304 / 1.4301
3	* Strainer screen	AISI304 / 1.4301
4	* Gaskets	St.Steel / Graphite
5	Valve seat	AISI410 / 1.4006
6	Valve	AISI440C / 1.4125
7	Lever	AISI304 / 1.4301
8	Float	AISI304 / 1.4301
9	Air vent	Bimetallic
10	Bolts	A2 - 80
11	Nuts	A2

* Available spare parts

