

DOUBLE WINDOW SIGHT GLASS DW40S (DN 32 – DN 50)

DESCRIPTION

For monitoring the right operation of a steam trap to avoid leakage of live steam and consequently big energy losses, a sight glass is recommended to be installed downstream of the steam trap.

Double window DW sight glass, has been designed for this particular application.

Connections are female screwed or flanged.

OPTIONS: Stainless steel construction
USE: Condensate pipes downstream steam traps.

AVAILABLE MODELS: DW 40 S

SIZES: DN 1 1/4" to DN 2" ; DN 32 to DN 50

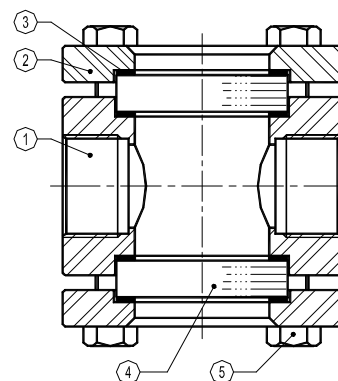
CONNECTIONS: Female screwed ISO 7/1Rp(BS21).
NPT (ANSI B1.20.1)
Flanged EN 1092-1 or ANSI

INSTALLATION: Horizontal or vertical installation.
See IMI, installation and maintenance instructions.

PMO – Max. operating pressure 25 bar

TMO – Max. operating temperature 280 °C

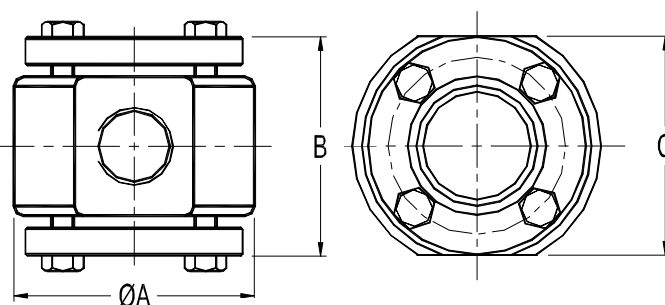
How to order: i.e. DW40 DN 2" BSP.


CE MARKING (PED - European Directive 97/23/EC)

| PN 40 | Category |
|----------|---------------------------|
| DN 32 | SEP - art. 3, paragraph 3 |
| DN 40-50 | 1 (CE Marked) |

DIMENSIONS (mm)-Screwed EN 1092-1 Flanges

| SIZE DN | A | B | C | WGT. Kgs | D | WGT. Kgs |
|---------|-----|-----|-----|----------|-----|----------|
| 32 | 130 | 115 | 114 | 6,2 | 180 | 9,5 |
| 40 | 130 | 115 | 114 | 6,5 | 200 | 10,5 |
| 50 | 130 | 125 | 114 | 7,5 | 230 | 12,5 |


MATERIALS

| POS.Nr. | DESIGNATION | MATERIAL |
|---------|----------------|-------------------------------------|
| 1 | Body | S355J2G3 / 1.0570 ; P250GH / 1.0460 |
| 2 | Glass nut | S355J2G3 / 1.0570 |
| 3 | * Gasket | St.Steel / Graphite |
| 4 | * Window glass | Borosilicate |
| 5 | Bolts | Steel 8.8 |

*Available spare parts.

